

TE 30
TE 50
TE 110
Injection Unit

Screw & Barrel Type		O	A	B	S	O	A	B	S	O	A	B
Screw Diameter	mm	14	16	18	18	20	22	25	22	25	28	32
Injection Pressure	kg/cm ²	2600	2580	2039	2800	2643	2184	1691	3330	2579	2056	1574
	Mpa	255	253	200	275	259	214	166	327	253	202	154
Injection Holding Pressure	kg/cm ²	2080	2064	1631	2240	2114	1747	1353	2664	2063	1645	1259
	Mpa	204	202	160	220	207	171	133	261	202	161	123
Theoretical Injection Volume	cm ³	9	12	15	23	28	34	44	42	54	68	88
Shot Weight (PS)	g	8	11	14	21	26	41	40	38	49	62	80
Screw Stroke	mm	60	60	60	90	90	90	90	110	110	110	110
Injection Speed	Standard	mm/s	500	500	500	500	500	500	400	400	400	400
	High Speed	mm/s	1000	1000	1000	1000	1000	1000	800	800	800	800
Injection Rate	Standard	cm ³ /s	77	101	127	127	157	190	152	196	246	322
	High Speed	cm ³ /s	154	201	254	254	314	380	304	393	493	643
Plasticizing Capacity	kg/h	8	11	16	16	21	27	38	27	38	51	73
Screw Revolution	rpm	500	500	500	500	500	500	500	500	500	500	500

Clamping Unit

Clamping Force	ton(kN)	30 (294)	50 (490)	110 (1079)
Distance Between Tie-Bar (H x V)	mm	310 x 310	360 x 360	410 x 410
Platen Size (H x V)	mm	460 x 460	530 x 530	630 x 630
Opening Stroke	mm	210	250	350
Daylight	mm	460	600	750
Min. Mold Height	mm	80	120	150
Max. Mold Height	mm	250	350	400
Ejector Force	ton (kN)	1 (10)	2 (20)	3.3 (32)
Ejector Stroke	mm	50	70	80

General

Total Heat Capacity	kW	2.5	2.8	3.2	4.1	4.5	5.0	5.9	5.4	7.3	8.3	7.9	
Total Electric Power Capacity	Standard	kW	11.9	12.3	12.6	19.1	19.6	20.1	20.9	23.2	25.1	26.1	25.7
	High Speed	kW	21.3	21.7	22.0	34.2	34.6	35.1	36.0	41.0	42.9	43.9	43.5
Machine Weight	ton	2.8			3.6				4.3				
Machine Dimension (L x W x H)	m	3.6 x 1.1 x 1.5			3.9 x 1.2 x 1.6				4.6 x 1.3 x 1.7				

1. Theoretical Injection Volume : Screw Dia x Screw Stroke

2. Clamping method is double toggle design for all models.

3. Specifications can be changed for improved development without prior notice.

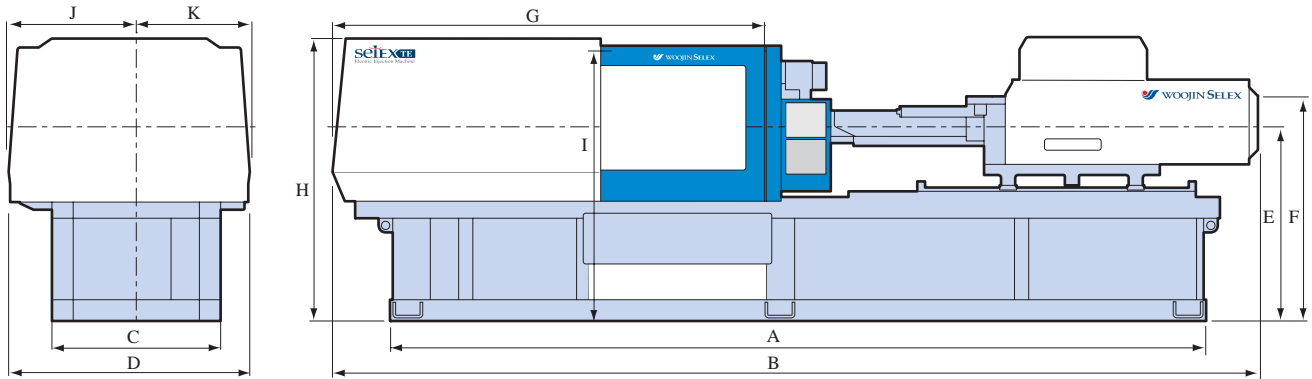
TE 150				TE 200				TE 250			TE 350			TE 350W			TE 450		
--------	--	--	--	--------	--	--	--	--------	--	--	--------	--	--	---------	--	--	--------	--	--

S	O	A	B	S	O	A	B	O	A	B	O	A	B	O	A	B	O	A	B
28	32	36	40	32	36	40	45	45	50	55	60	65	70	60	65	70	65	70	80
3397	2601	2055	1665	3148	2488	2015	1592	2552	2067	1708	2303	1962	1692	2303	1962	1692	2389	2060	1577
333	255	202	163	309	244	198	156	250	203	167	226	192	166	226	192	166	234	202	155
2718	2081	1644	1332	2518	1990	1612	1274	2042	1654	1366	1842	1570	1354	1842	1570	1354	1911	1648	1262
267	204	161	131	247	195	158	125	200	162	134	181	154	133	181	154	133	187	162	124
92	121	153	188	129	163	201	254	318	393	475	735	862	1000	735	862	1000	995	1325	1507
84	110	139	171	117	148	183	231	289	357	432	669	785	910	669	785	910	905	1205	1372
150	150	150	150	160	160	160	160	200	200	200	260	260	260	260	260	260	300	300	300
250	250	250	250	200	200	200	200	150	150	150	150	150	150	150	150	150	150	150	150
500	500	500	500	400	400	400	400	300	300	300									
154	201	254	314	161	204	251	318	239	295	356	424	498	577	424	498	577	498	663	754
308	402	509	628	322	407	503	636	477	589	713									
46	65	90	119	58	92	121	166	135	179	231	209	259	315	209	259	315	217	317	377
450	450	450	450	400	400	400	400	300	300	300	215	215	215	215	215	215	180	180	180

150 (1471)	200 (1961)	250 (2452)	350 (3432)	350 (3432)	450 (4413)
510 x 510	560 x 560	610 x 610	720 x 720	820 x 820	870 x 820
750 x 750	820 x 820	900 x 900	1060 x 1060	1180 x 1180	1260 x 1210
410	490	540	670	690	730
910	1090	1190	1400	1420	1530
180	200	250	300	300	350
500	600	650	730	730	800
3.5 (34)	3.5 (34)	4.5 (44)	6 (59)	6 (59)	10 (98)
100	120	130	140	140	180

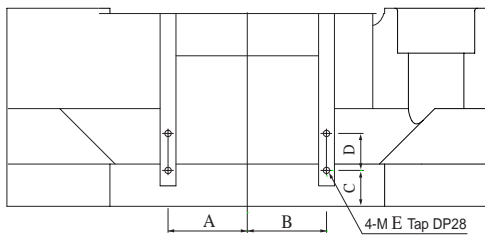
8.3	8.9	9.0	10.1	8.9	9.4	10.5	12.2	13.2	14.7	16.3	22.6	24.5	26.4	22.6	24.5	26.4	22.0	28.5	30.6
26.1	26.7	26.8	27.9	26.7	27.2	28.3	30.0	32.3	33.8	35.4	58.2	60.1	62.0	58.2	60.1	62.0	60.2	66.7	68.8
43.9	44.5	44.6	45.7	44.5	45.0	46.1	47.8	51.4	52.9	54.5									
6.2				8				12			17.5			18.5			22		
5.3 x 1.4 x 1.8				6.1 x 1.6 x 2.0				6.6 x 1.7 x 2.0			7.9 x 1.8 x 2.1			8.2 x 1.8 x 2.2			8.5 x 1.9 x 2.3		

Machine Dimension

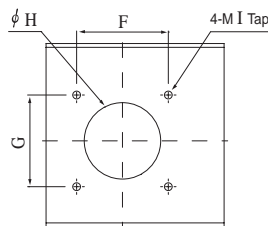


	A	B	C	D	E	F	G	H	I	J	K
TE 30	3157	3572	620	1084	1065	1135	1640	1519	1383	572	512
TE 50	3530	3845	678	1180	1110	1210	1770	1557	1445	620	560
TE 110	4280	4593	850	1274	1205	1325	2125	1644	1532	646	628
TE 150	4700	5230	970	1378	1263	1442	2424	1675	1648	689	689
TE 200	5550	6060	1140	1600	1385	1564	2850	1905	1815	800	800
TE 250	5750	6528	1190	1700	1370	1579	3047	1993	1835	900	800
TE 350	7000	7900	1340	1750	1415	1625	3920	2100	1970	875	875
TE 350W	7095	8115	1470	1800	1465	1675	4135	2200	2070	900	900
TE 450	7400	8500	1600	1900	1495	1650	4435	2300	2115	950	950

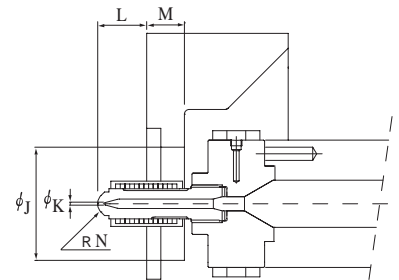
Robot Mounting



Hopper Mounting



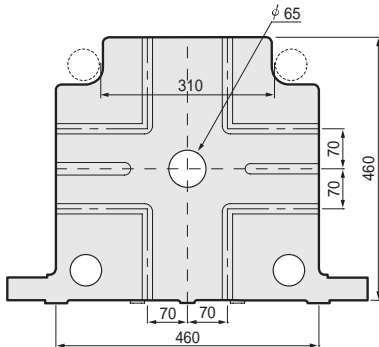
Nozzle Dimension



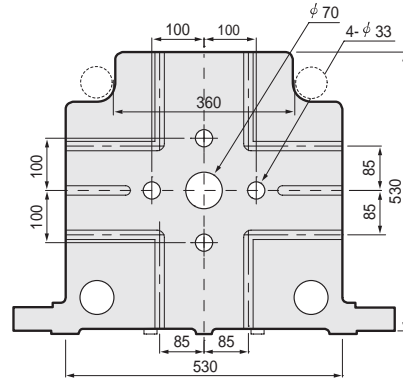
	A	B	C	D	E	F	G	H	I	J	K	L	M	N
TE 30	70	70	50	35	12	80	80	60	8	90	2	50	30	9
TE 50	85	85	50	35	12	80	80	70	8	90	2	50	25	9
TE 110	105	105	47	40	12	100	100	80	12	100	3	50	30	10
TE 150	150	150	62	70	14	120	120	80	12	100	3.5	50	30	10
TE 200	150	150	70	70	14	120	120	80	12	100	3.5	50	30	15
TE 250	150	150	68	70	14	120	120	80	12	120	3.5	50	40	15
TE 350	210	210	67	100	20	127	127	115	12	120	3.5	50	40	15
TE 350W	210	210	67	100	20	127	127	115	12	120	3.5	50	40	15
TE 450	210	210	67	100	20	165	165	68	12	200	6	60	60	19

Platen Dimension

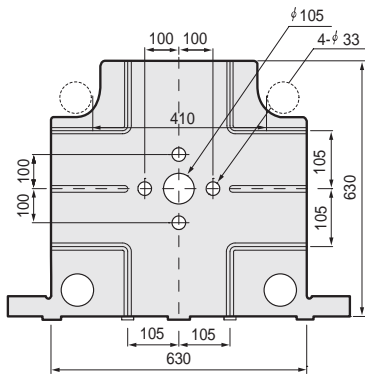
30 ton



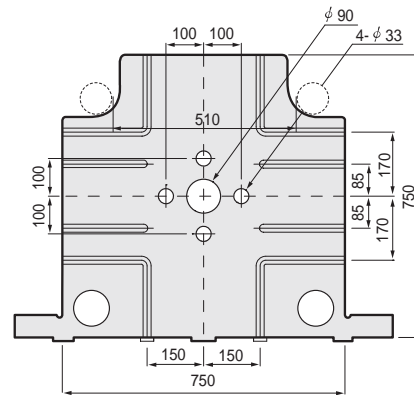
50 ton



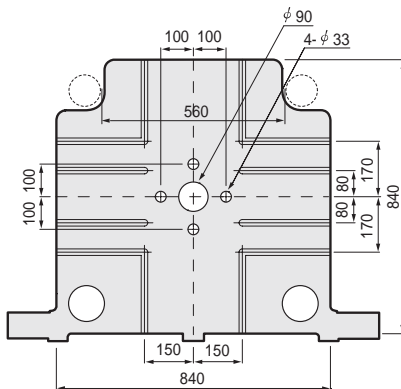
110 ton



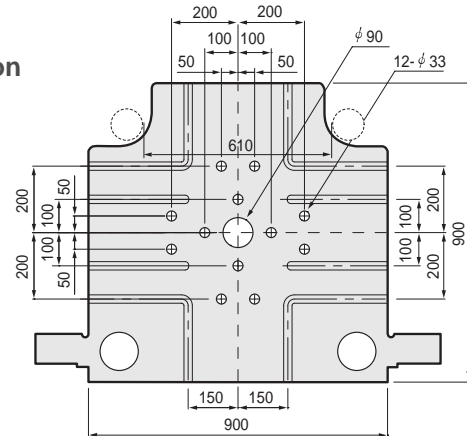
150 ton



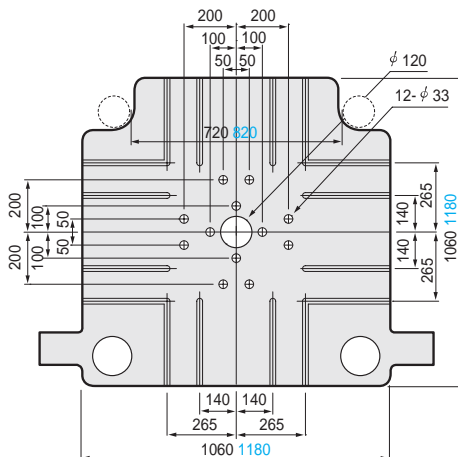
200 ton



250 ton



350 ton
350W



450 ton

